

What is their impact compared to single-use containers?



The alarming projections of climate change call for a drastic reduction of our carbon footprint, not only collectively through societal change but also individually through informed daily life choices. We analysed the environmental impact of a Swiss reCIRCLE BOX compared to several single-use takeaway containers. The functional unit (FU) used here is the supply of one meal in a take-away container.



How much better is a reCIRCLE BOX compared to a single use container?

Reusable containers are better than single use ones both in terms of carbon footprint and circularity



Usage



Carbon footprint



Circularity



1
time

82
g CO₂eq

32 %



200
times

19
g CO₂eq

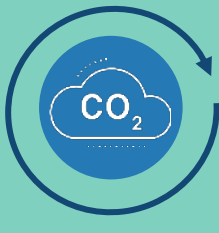
99 %

The circularity calculation is performed on an average amongst 3 types of single use boxes (Al, PP, kraft) based on the MCI methodology developed by the Ellen McArthur Foundation.



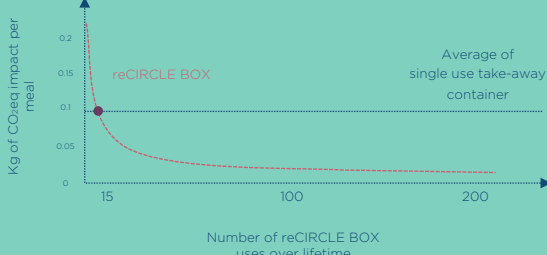
What are the conditions?

To become really circular AND reduce the carbon footprint, the reCIRCLE BOX needs to be used a minimum amount of times.



After only
15 uses

the **carbon footprint** of the reCIRCLE BOX **drops below** the one of an average single-use take-away box, and **circularity** has already reached **95%**



What is the action plan?

→ If you do not use a reusable container

Get a reusable BOX (like a reCIRCLE one) with you when buying food outside.



Make sure to have you own cutlery, napkin and bag to avoid unnecessary extra environmental impacts.



→ If you already use a reusable container

Reuse your BOX as much as possible to lower its environmental impact.

Make sure to have you own cutlery, napkin and bag to avoid unnecessary extra environmental impacts.

Additionally ...



When washing your container at home, use **less detergent**, use **colder water** than usual, if possible, install solar panels to power your dishwasher.

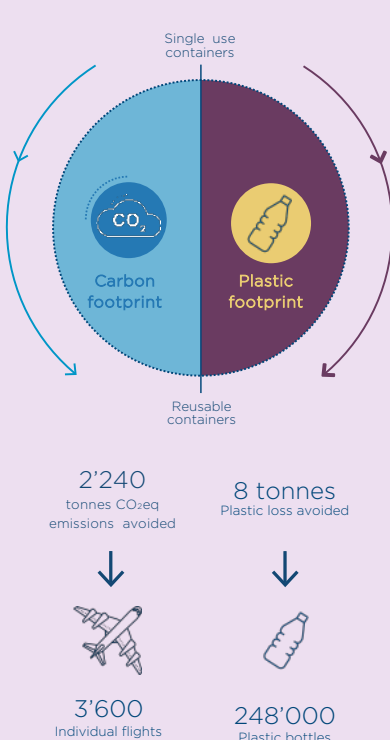


If you are **returning your container** to a restaurant after a meal, **do not wash** it before otherwise it will be unnecessarily washed twice (once by you, once by the restaurant).



What is the benefit of action?

If all current users of reCIRCLE were to adopt a greener way of washing (use less detergent and a colder water) and if 10% of the take-away meals sold in **Switzerland** were supplied in a reCIRCLE BOX instead of a single use container, the benefit for the environment would be significant.



For more accurate information please refer to the full presentation.